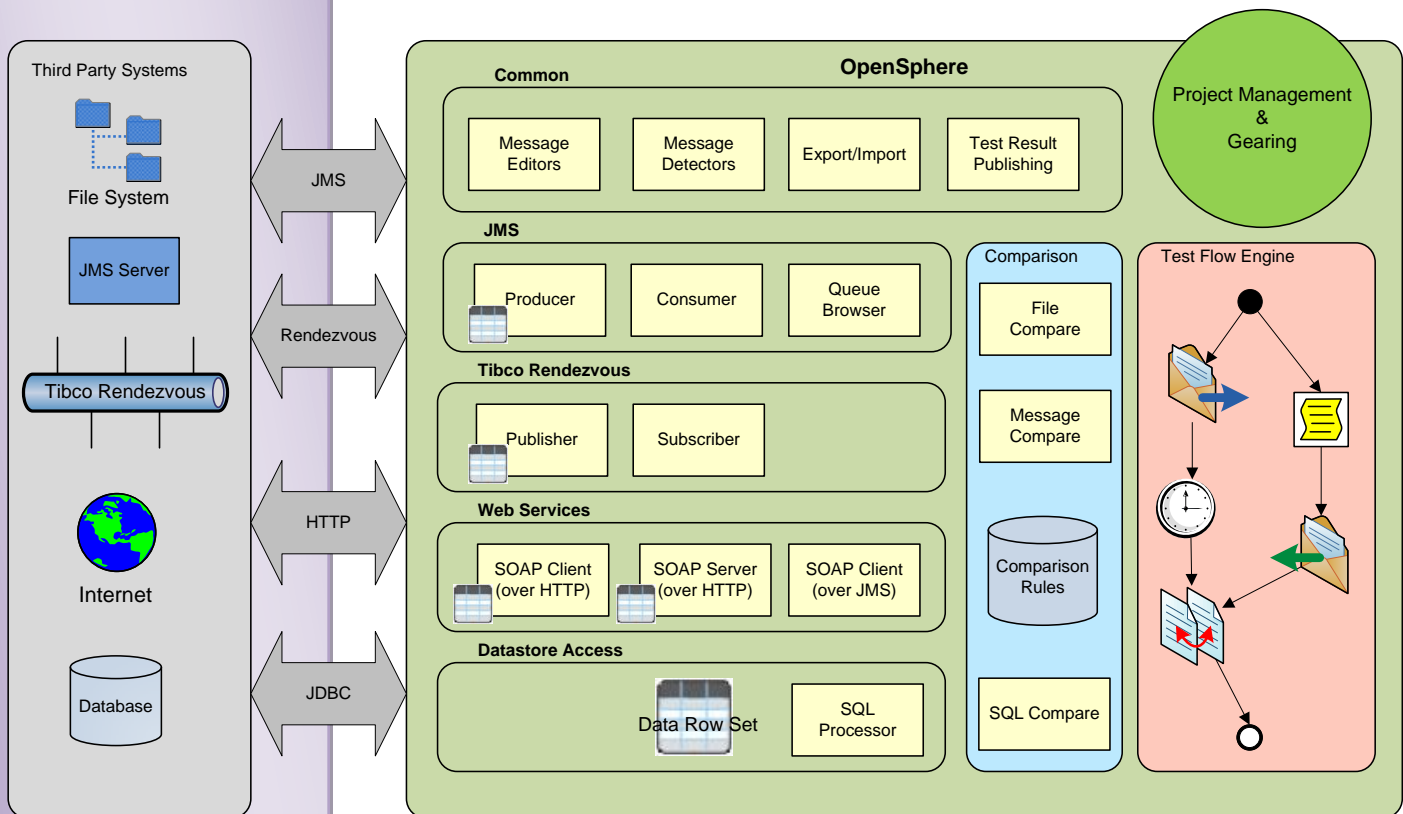


OpenSphere Release 2.4

OpenSphere is a client application that supports and simplifies the daily work of people that have to deal with technical aspects within a complex systems integration environment. Integration architects, software developers, systems integrators and testers get offered an easy to use and powerful framework that speeds up analysis, development and testing of message based middleware, web-services, database dependent applications and custom components.

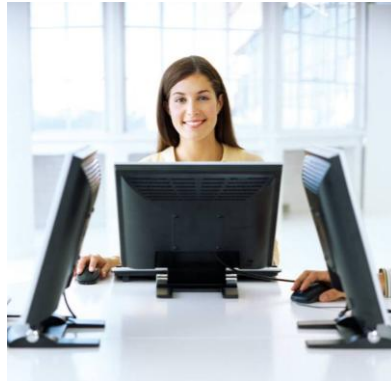


centeractive ag is your local partner in Switzerland for enterprise integration. We provide services and solutions covering the whole range of the integration process, from analysis of the IT landscape, project implementation, to full maintenance and support of operational integration solutions.

CORNER STONES

- ✓ Easy installation procedure
- ✓ No server component required
- ✓ Intuitive and easy to use GUI
- ✓ Common user and expert mode
- ✓ Detailed user manual
- ✓ Regression Testing Framework
- ✓ XML based
- ✓ Customizable
- ✓ Tibco™ integration
- ✓ Local Support Available
- ✓ Widely appreciated by integration analysts, developers and testers

Overview



The product offers comprehensive functionality for recording, publishing and forwarding messages. Message data including nested XML payload can easily be edited, stored to files and be reloaded at any time. The testing engine offers a graphical test flow designer, detailed reporting and result publishing.

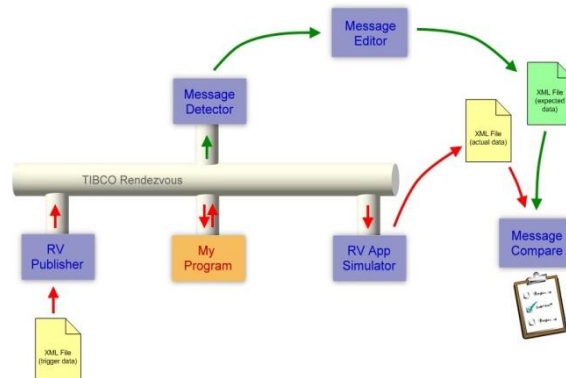
OpenSphere offers a set of highly configurable modules that can be combined with existing programs or components to build a complete integration environment for development and/or testing purpose

Concept

Single inbuilt modules such as Message Detectors, JMS Message Producers, Rendezvous™ Application Simulators or WebService Clients are highly configurable and can be used in different scenarios. Functions of custom programs may be triggered, produced messages compared with predefined ones, database content automatically updated and so on.

OpenSphere enables you to build tests that generate detailed reports, which enable you to quickly locate errors in your business process. **OpenSphere** is a client application that supports and simplifies the daily work of EAI developers and testers by offering an easy to use and powerful framework that

manages and integrates Tibco™ products, Java Messaging Services, SOAP based web services, databases and custom components. OpenSphere is based on projects that can freely be structured and configured in order to meet personal needs and preferences. The application contains a test engine driven by user defined test suites that contain a number of test cases with a graphical configurable test flow each.



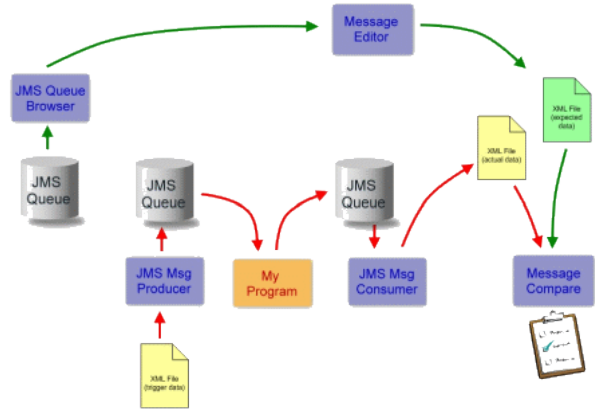
centeractive ag
 Worbstrasse 170
 3073 Gümligen

info@centeractive.com
 www.centeractive.com

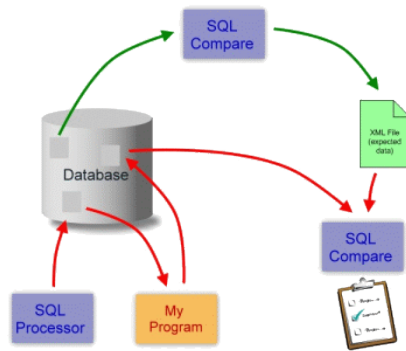
BASE FEATURES

- ✓ Message capturing and reply
- ✓ Message reporting, publishing and comparing for JMS, Webservice (SOAP over HTTP/JMS) and Tibco Rendezvous™
- ✓ Tibco EMS™ Monitor
- ✓ Variety of message editors and custom editors
- ✓ Simulating software components
- ✓ Substitution variables
- ✓ Row set driven message publishing
- ✓ etc.

OpenSphere makes use of XML to maintain the projects, single components and the application state over several sessions. Components and projects can easily be exported to XML files and shared with other team members, which may import them into their projects or use them in other tools such as rvsript.

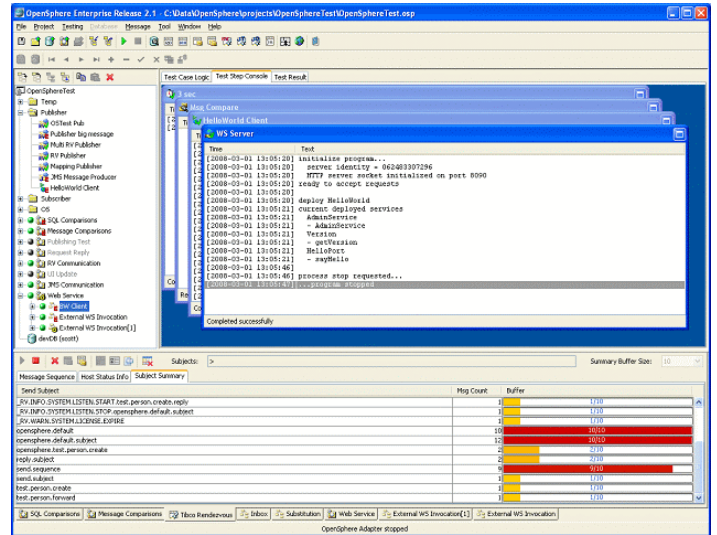


There are an unlimited number of scenarios where the flexibility of **OpenSphere** will facilitate your work. The different inbuilt components can quickly be configured to simulate not yet existing components in a development environment. This reduces dependencies on other software and naturally speeds up your projects. **OpenSphere** can be used to analyze the functionality of existing modules, to trigger processes and to compare the produced data.



OpenSphere GUI

The **OpenSphere** application offers a comprehensive but easy to use graphical user interface that lets you build projects with individual structure each. You can easily add, configure and run components that interact with third party systems like JMS, Tibco Rendezvous™, databases etc. Configured components can be exported and imported into other projects.



GRAPHICAL USER INTERFACE

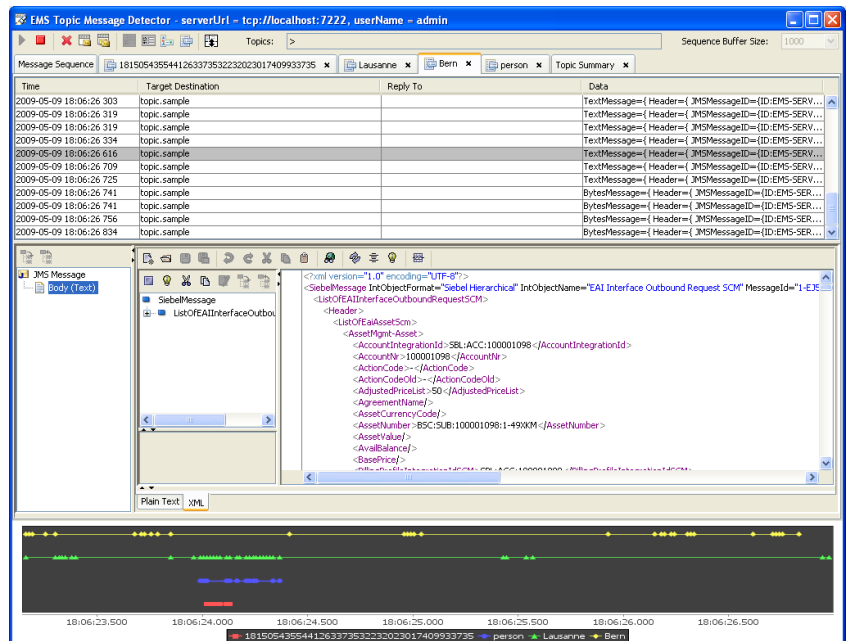
- ✓ Project Persistence
- ✓ Project Navigation Tree
- ✓ Console Views
- ✓ Inbound/Outbound Message Views
- ✓ Message Volume Bars
- ✓ Parallel and Serial Execution of Components
- ✓ etc.

Message Detector

The Message Detector is one of the core modules of **OpenSphere** as it detects messages of a certain type (Tibco Rendezvous™ or JMS) and presents them to the user through different views. It provides powerful message filtering functionality and lets one easily edit, store and re-send detected messages. Filtered messages are also presented in a chart within specific message time lines. Therefore chronological dependencies between messages of different types appear in a concentrated view.

MESSAGE DETECTOR

- ✓ Message capturing
- ✓ Message Replay
- ✓ Message Storing
- ✓ Enhanced Filter Features
- ✓ Message Event Swapping
- ✓ Chart with Message Timelines
- ✓ etc.



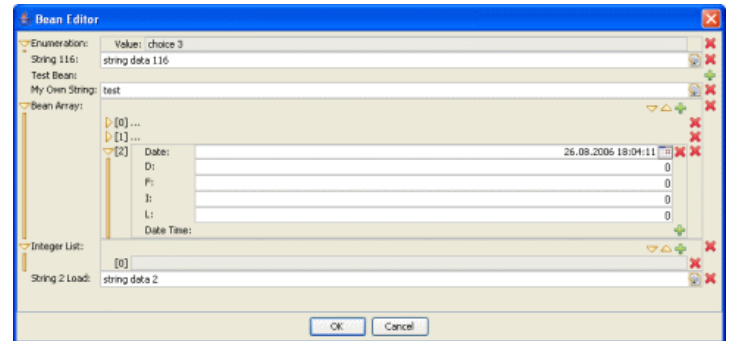
EDITORS

- ✓ Message Editors for Rendezvous, JMS and WebServices
- ✓ Object Editor
- ✓ XML Editor
- ✓ Hex Editor
- ✓ Date/Time Editor
- ✓ etc.

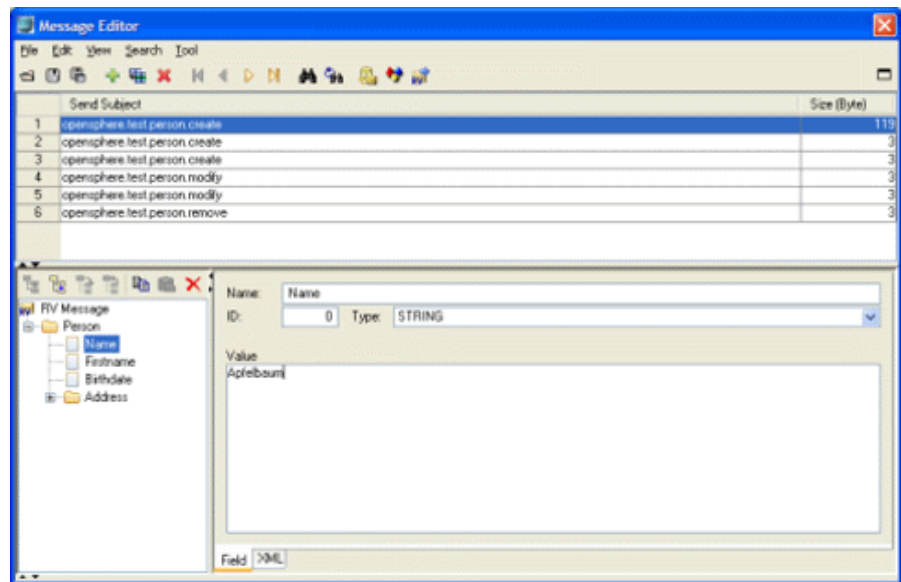
Editors

The tool offers a wide variety of editors that get automatically invoked depending on the format of the data. You will find a generic Hex editor, customizable XML editors and general purpose database editors.

The object form editor lets you dynamically compose objects that get used as parameters for invoking a web service operation for example.



Special editors for specific data structures such as Tibco Rendezvous™ and JMS will convince any censorious user.

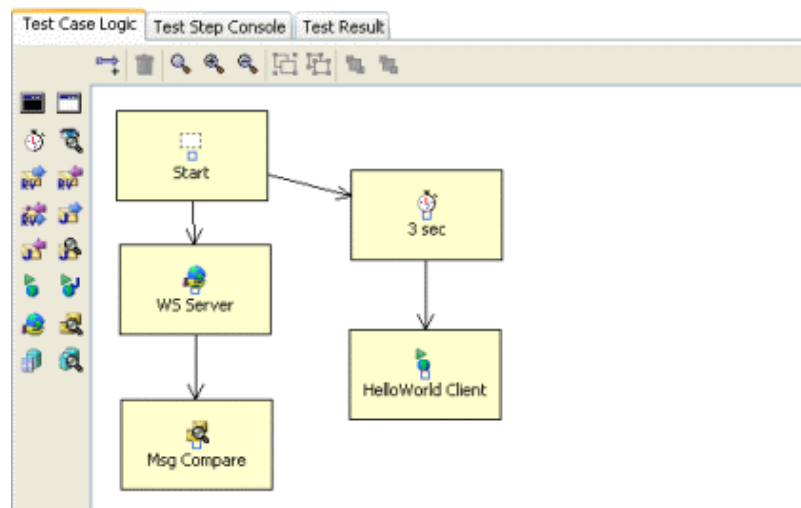


TESTING FEATURES

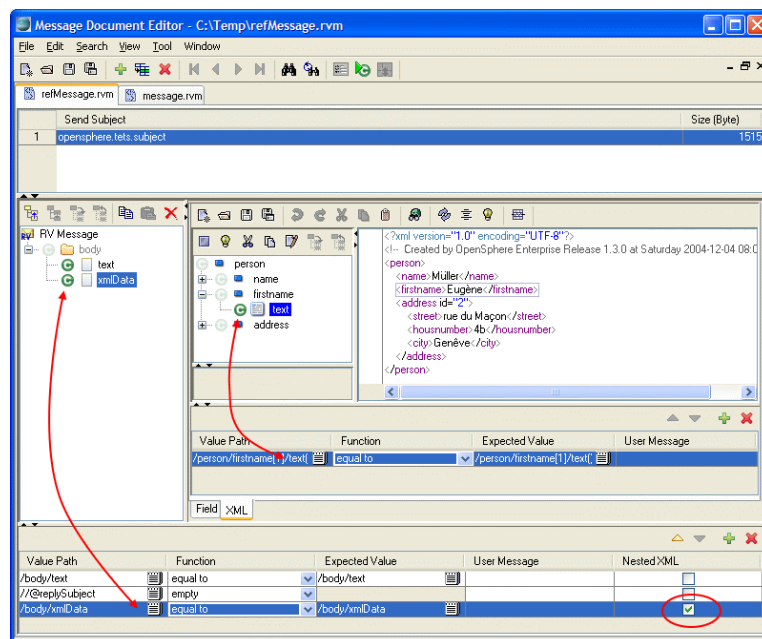
- ✓ Automated Regression Tests
- ✓ Test Hierarchy through Suites, Test Cases and Test Steps
- ✓ Graphical Test Flow Editor
- ✓ Graphical & Intuitive Comparison Rule Editor
- ✓ Comparing of XML structures applying user configured comparison rules
- ✓ Comparing of text files and CSV files
- ✓ Comparing of data retrieved from databases
- ✓ Quick Definition of Comparison Rules
- ✓ Common User and Expert Mode
- ✓ Automatic publishing of testing results
- ✓ Running tests in batch mode through Apache Ant
- ✓ etc.

Testing Framework

OpenSphere enables you to build tests that generate such detailed reports that you will be able to quickly find most errors. The application contains a test engine driven by user defined test suites that contain a number of test cases with a graphical configurable test flow each.



Comparison rules can be defined for entire messages through simple mouse clicks; this also includes nested XML structures. In case of special needs, experts get full control over generated XPath expressions and can extend the powerful comparison rules generated by default.



centeractive ag
Worbstrasse 170
3073 Gümligen

info@centeractive.com
www.centeractive.com

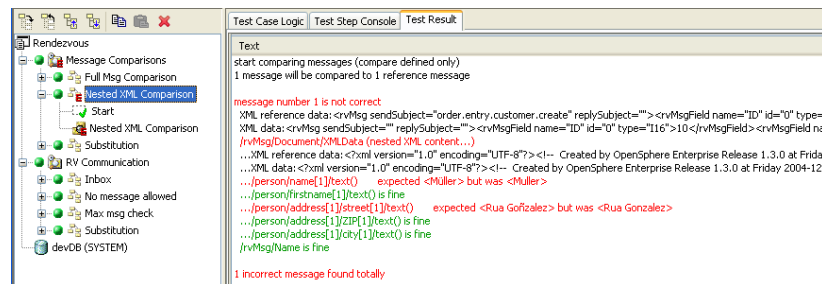
YOUR BENEFIT

- ✓ Quicker Test Setup
- ✓ Higher Quality Through Reproducible Regression Testing
- ✓ Swiss Local and Fast Reacting Support
- ✓ etc.

SERVICES AVAILABLE

- ✓ Technical Support
- ✓ Assistance with Configuration
- ✓ Training
- ✓ Tool Customizing
- ✓ Overall Testing Framework
- ✓ Regression Test Maintenance

Test results are reported in an easy readable form either directly in the **OpenSphere** GUI or they can be exported to HTML format and made available to other people over the web. Supporting a proven testing methodology, **OpenSphere** lets you build sets of regression tests adjusted to your project specific requirements. Once the tests are built, they can be run at any time yielding immediate and detailed reports of the test results.



This automated regression testing approach strongly improves the reliability of integration solutions. It is a key enabler for enterprises to adapt their systems to changing requirements on time and to budget.

Conclusion

OpenSphere is built by integration experts to be used by integration by integration specialists. Nevertheless its user interface is kept simple and straight forward in order to allow anyone quick hands on experience with the widely available features. We constantly get feed-back from our users and improve the application to keep it aligned with the requirements that arise in the rapidly evolving and complex integration environments.

Our target is to offer enhanced services and support to our customers to ensure that the use of **OpenSphere** adds a real benefit to their business.